

KARIBAN

REFERENCE : K266

SIZES : S_M_L_XL_XXL_3XL

COMPOSITION :

Main fabric : Combed cotton single pique (22/1) - 220 For garment, collar band and inside slit 100%cotton

Rib : Stripped cotton flat rib 1X1 For collar Height 5.5cm

For bottom sleeve Height 2cm

Same as your sample 100%cotton

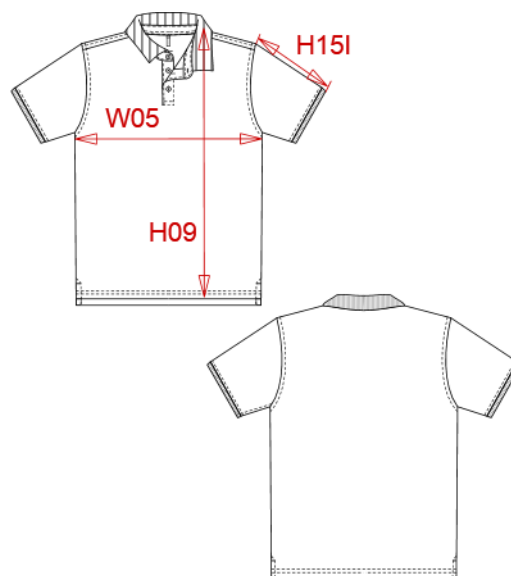
WEIGHT :

Main fabric : 220 gsm

Rib : 650gsm

ARTICLE WEIGHT :

250 gr/pc



DESCRIPTION
Français : Polo mélange bicolore homme
English : Men's two-tone marl polo shirt
Nederlands : Herenpolo tweekleurige mix
Deutsch : Zweifarbiges Mischgewebe-Polohemd für Herren
Español : Polo bicolor para hombre
Italiano : Polo uomo mélange bicolore
Português : Polo mélange bicolor de homem

COLORS	PANTONE SERIGRAPHIE
Marl Navy	Based on 433C
Marl Wine	Based on 504C
Marl fir green	Based on 5467C

MEASUREMENT						
Description	S	M	L	XL	XXL	3XL
H09 (M) Hauteur totale devant / Front total height	70	72	74	76	78	80
W05 (M) 1/2 largeur poitrine à 1.5cm de l'emmanchure / 1/2 chest width at 1.5cm below armhole	50	53	56	59	62	65
H15I (M) Longueur manche avec bord côte / Sleeve length with rib	21,50	22,25	23	23,75	24,50	25,25

CARE LABEL

PACKING	
Box	30 pcs / box S => L:60cm W:40cm H:18cm GW:8.4kg NW:7.3kg M => L:60cm W:40cm H:18cm GW:8.9kg NW:7.8kg L => L:60cm W:40cm H:18cm GW:9.4kg NW:8.3kg XL => L:60cm W:40cm H:18cm GW:9.9kg NW:8.8kg XXL => L:60cm W:40cm H:20cm GW:10.5kg NW:9.4kg 3XL => L:60cm W:40cm H:20cm GW:11kg NW:9.9kg